

# DAY AND NIGHT

## 1 Listen and read.

Days and nights occur because the Earth spins as it travels around the Sun.

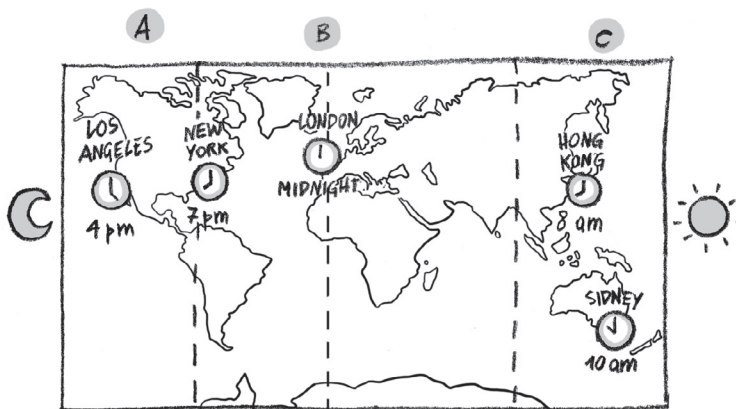
When it is day where you live it is night on the other side of the world.

The time changes as you travel around the world.


The Earth is conventionally divided into 24 time zones starting from the Prime Meridian (which is in Greenwich, London).

## 2 Look at the map and colour.

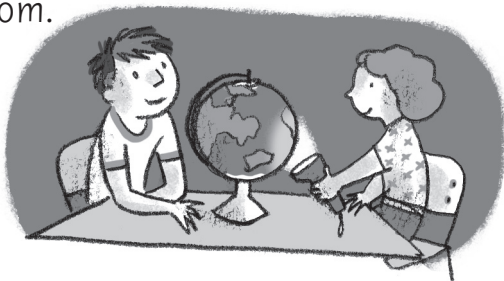
- In **red**: the Prime Meridian
- In **orange**: zone A
- In **blue**: zone B
- In **yellow**: zone C



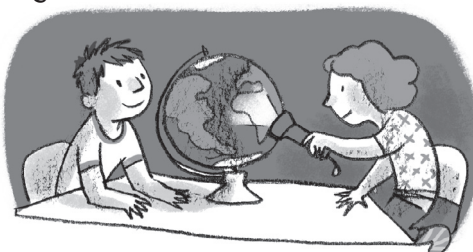
## 3 Make an experiment.

You need: – a torch  – a globe

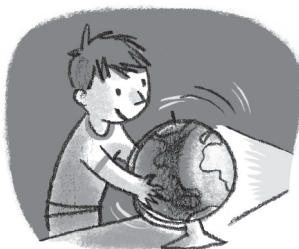
- 1 Work with a friend in a dark room.



- 2 Shine a torch on one side of the globe.



- 3 Your friend turns the globe slowly around. One part of the globe is in the light for a time (day) while the rest is in the dark (night).



### KEY VOCABULARY

Earth *Terra* • globe *mappamondo*  
 • Prime Meridian *meridiano zero*  
 • slowly *lentamente* • time *tempo*  
 • to occur *succedere* • to shine *splendere*  
 • to spin *girare* • to travel *viaggiare*  
 • torch *torcia*  
 • world *mondo* • zones *zone*